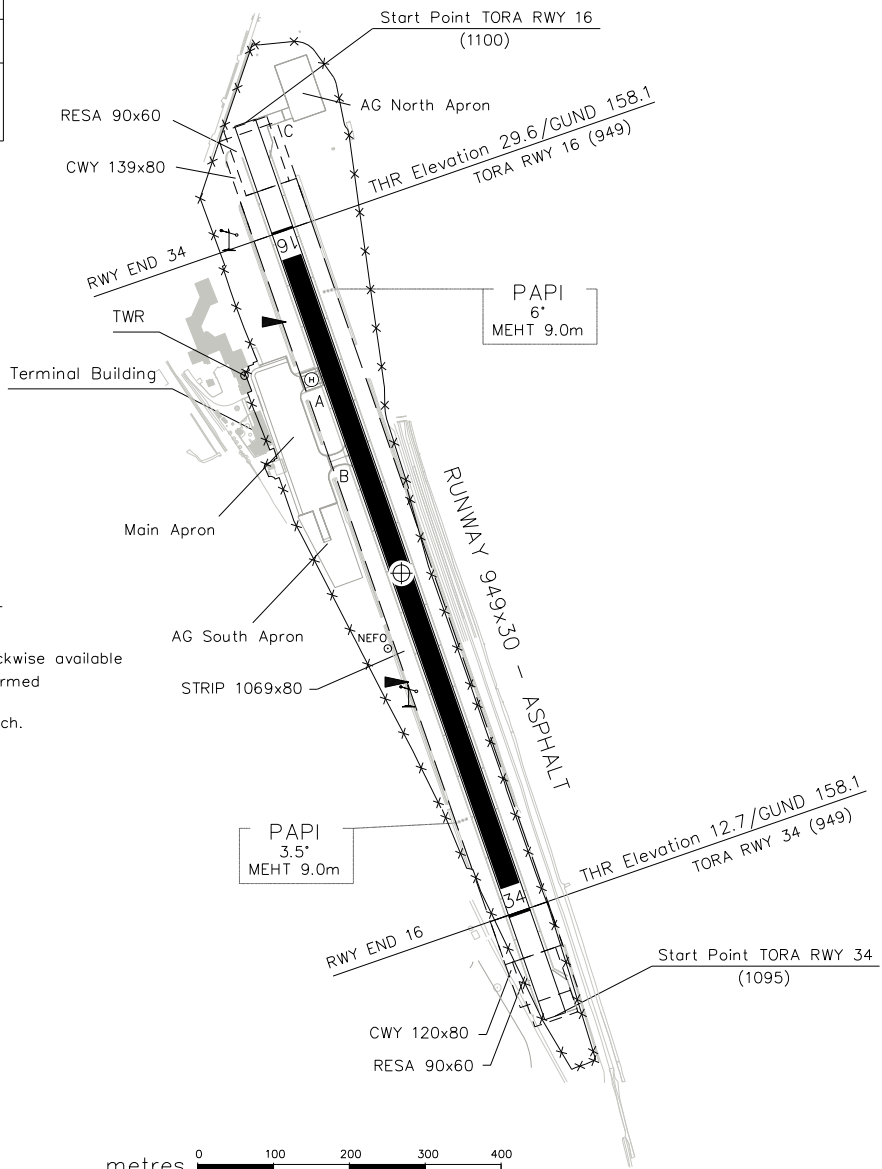


Bearings are magnetic Distances in metres Elevation in FT AMSL Coordinates WGS84	AFIS 123.700	AD ELEV 30	MARINA DI CAMPO	
		APRON ELEV 25		

RWY	QFU	THR	bearing strength
16	160°	N 42°45'54.68" E 010°14'16.41"	PCN 19
34	340°	N 42°45'25.48" E 010°14'29.52"	F/B/Y/T

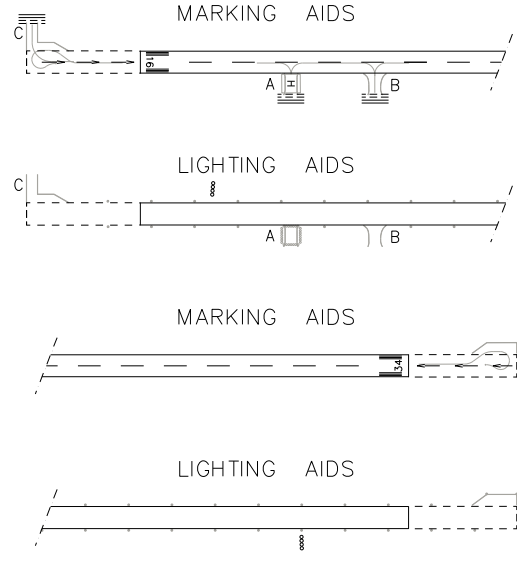


VAR 2° E - 2015.0  
Annual rate of change 6' E

- REMARKS:
- Bearing strength of runway extension overrun RWY 34 with PCN 19/F/A/Y/T
  - PAPI RWY16 rotated in azimuth 5° clockwise available only for last 1000 m for circling performed east of RWY.  
Not to be used for straight-in approach.

CHANGE: New aerodrome Code ZC

TWY IDENT	WIDTH	bearing strength
A	15	PCN 19
B	15	F/B/Y/T
C	15	PCN 11 F/A/Y/T



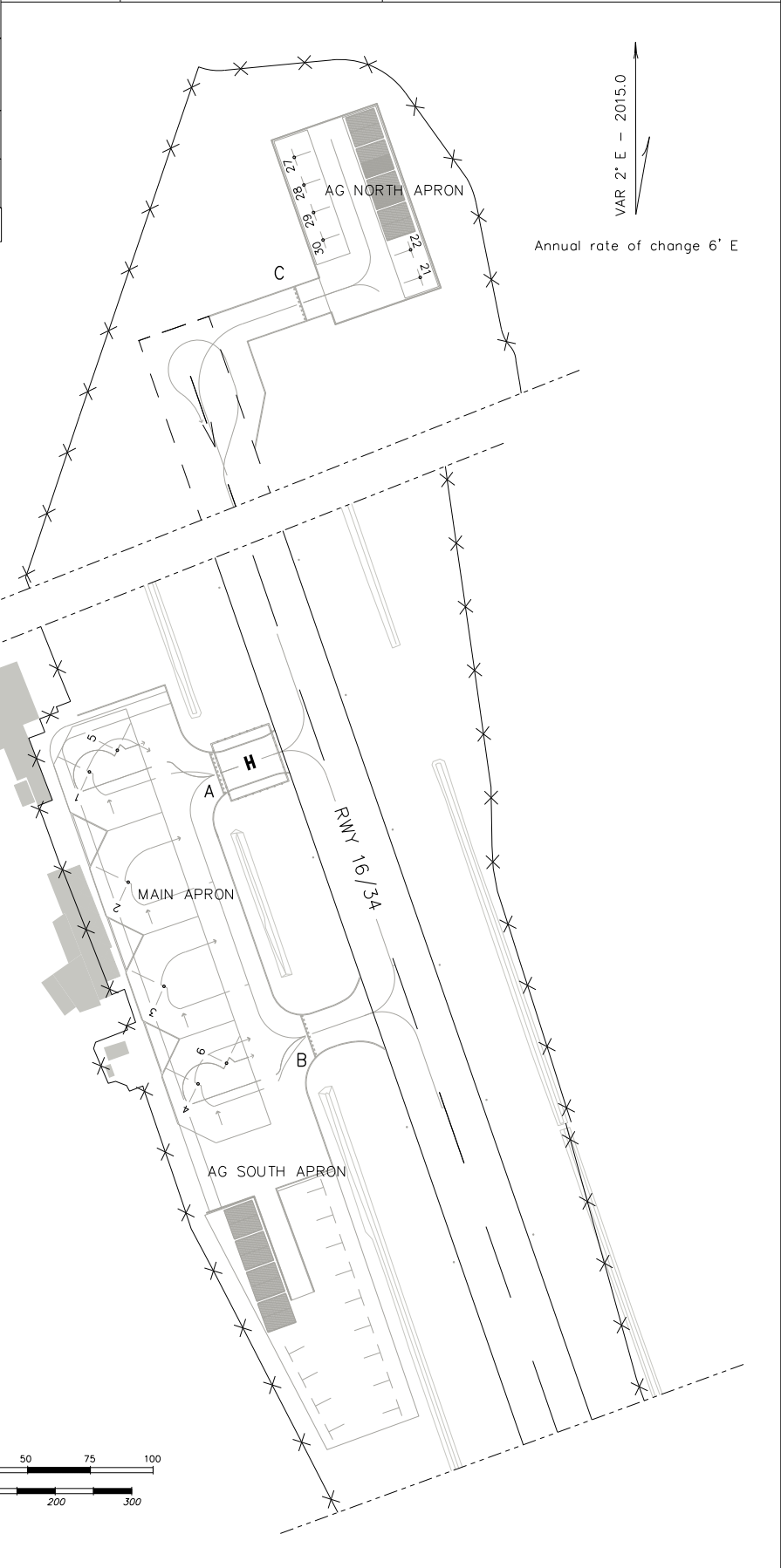
Bearings are magnetic Distances in metres Elevation in FT AMSL Coordinates WGS84	AFIS 123.700	AD ELEV 30	MARINA DI CAMPO	
		APRON ELEV 25		

APRON	bearing strength
MAIN APRON	PCN 19 F/B/Y/T
AG NORTH APRON	PCN 10 F/A/Y/T
AG SOUTH APRON	30Kg/cm <sup>2</sup>

STANDS COORDINATES

MAIN APRON		
Stands	N	E
1	42° 45' 48.23"	010° 14' 15.14"
2	42° 45' 46.80"	010° 14' 15.79"
3	42° 45' 45.45"	010° 14' 16.39"
4	42° 45' 44.18"	010° 14' 16.96"
5	42° 45' 48.51"	010° 14' 15.63"
6	42° 45' 44.44"	010° 14' 17.47"

AG NORTH APRON		
Stands	N	E
21	42° 45' 59.95"	010° 14' 18.65"
22	42° 46' 00.30"	010° 14' 18.49"
27	42° 46' 01.52"	010° 14' 16.47"
28	42° 46' 01.16"	010° 14' 16.63"
29	42° 46' 00.80"	010° 14' 16.79"
30	42° 46' 00.45"	010° 14' 16.95"



CHANGE: New aerodrome Code 2C